

Implementing a Framework for Collaborative Action Spatial Strategies on the Island of Ireland

Session 2: Implementing Cross-Border Spatial Planning

Developing the Ulster-Connaught Corridor: A spatial Planning Perspective

Dr. Chris Boomer

Western Divisional Planning Office, Omagh

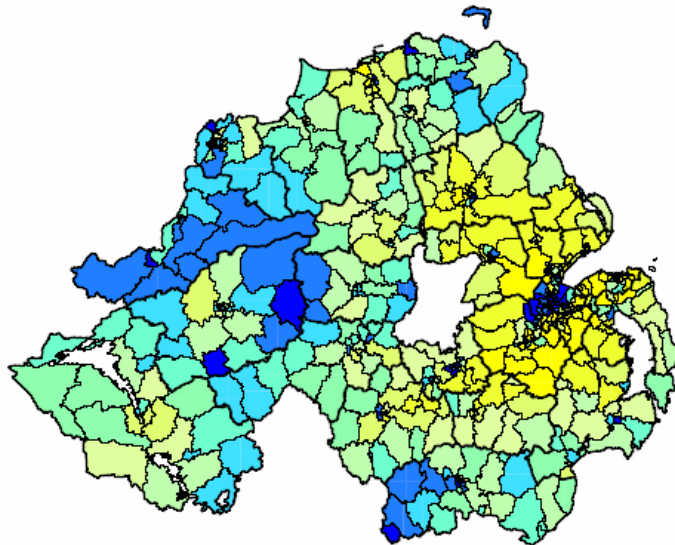
Canal Court Hotel, Newry, 9 November 2006



Developing the Ulster- Connaught Corridor

A Spatial Perspective
By Dr Chris Boomer

Northern Ireland Multiple Deprivation Measures 2005

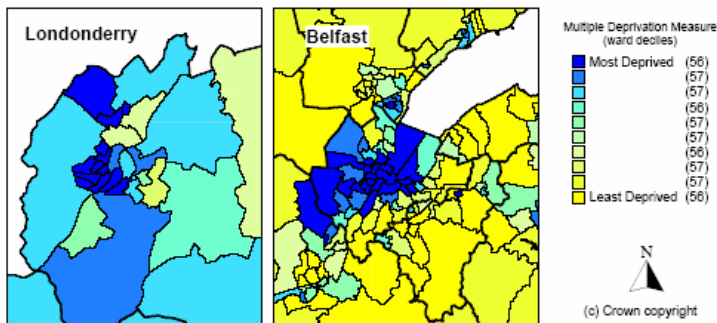


Borders contain some of the most economically deprived areas.

➤ Strabane ranked as Northern Ireland's most deprived Council District

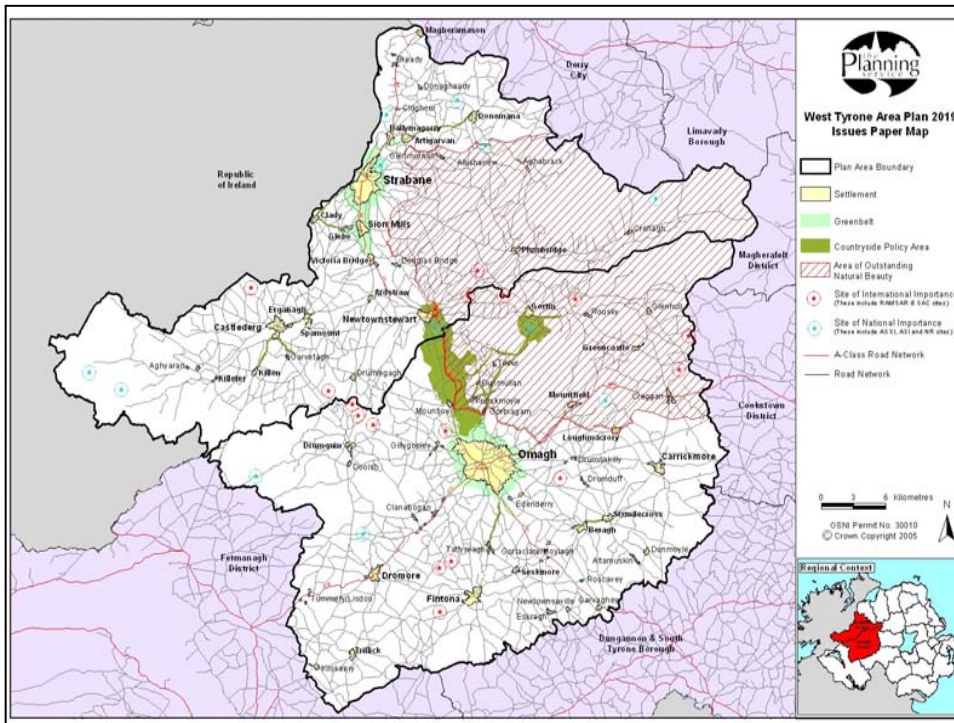
➤ All border district council areas in the poorer half of the rankings

(Northern Ireland Multiple Deprivation Measures, 2005).



Filling the void

Developing co-operation at sub regional level



Develop comparable data sets

Establish creative forums to exchange ideas

Development of a common vision

Avoid reinventing existing spatial or land use policies

Adhere to the Blueprint for an all Island economy

Address what is unique or distinctive to the area

The changing agricultural base in the western borders



29% of Northern Ireland's farmers live in Tyrone and Fermanagh

Ireland is the least forested part of Europe representing:

- 6% of land area in N. Ireland
- 10% of land area in the Republic.
- 33% European average

Tyrone and Fermanagh has:

- 53% of Forest Service (NI) stock
- 44,400 hectares of forestry land

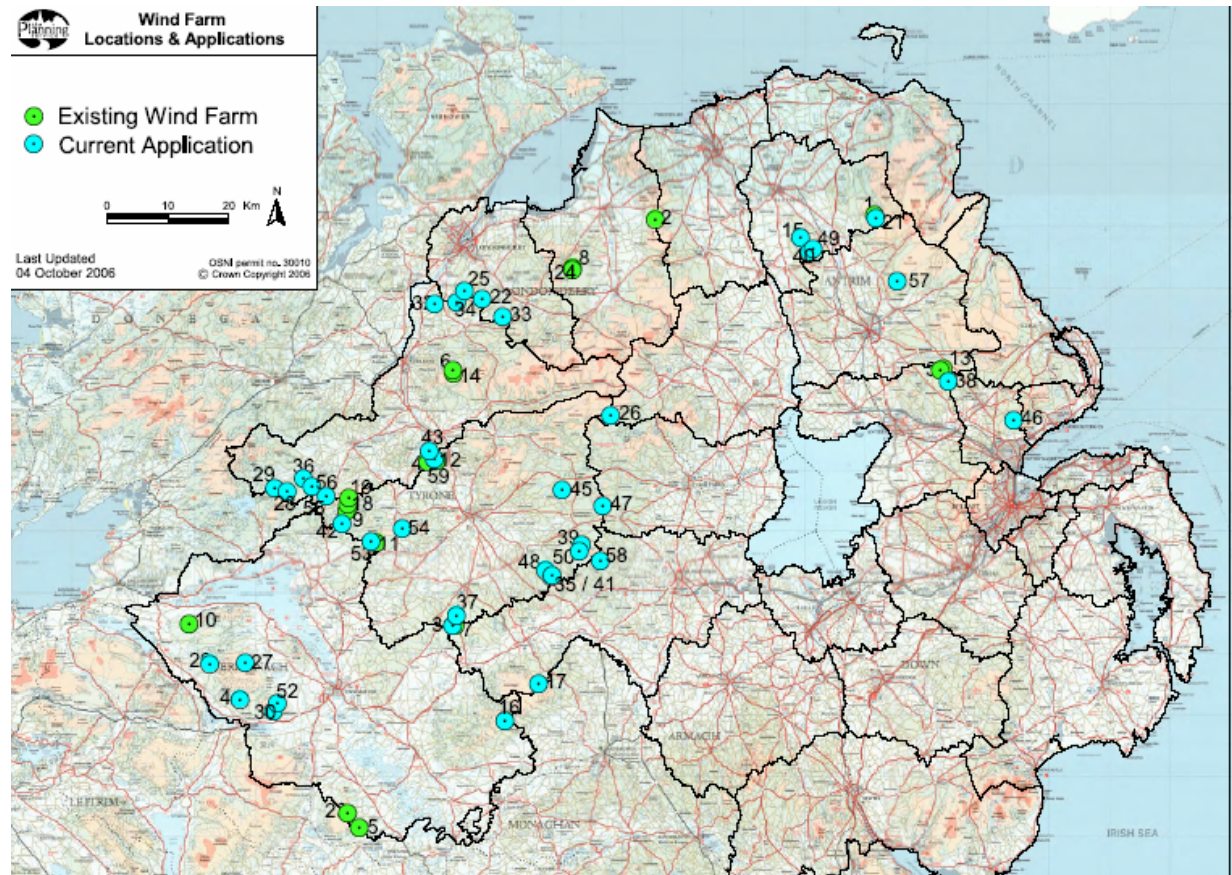
Wind energy



In Tyrone and Fermanagh there are:

82 Turbines to generate 90mw approved

28 applications awaiting decision for 277 turbines, representing 70% of proposals Northern Ireland



Construction related industries in Tyrone and Fermanagh



- 14% of labour force work in quarrying and construction, 25% greater than national average
- 16% of labour force work in manufacturing, higher than national average
- One third of workers are involved in construction or related activities including professional and promotional services in some areas.



Tourism

Key attractors include shorelines, lake lands and mountains

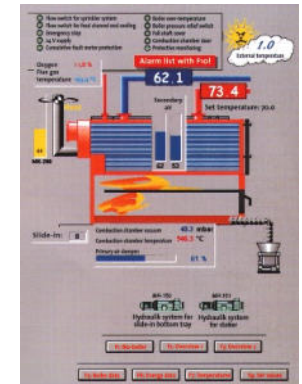
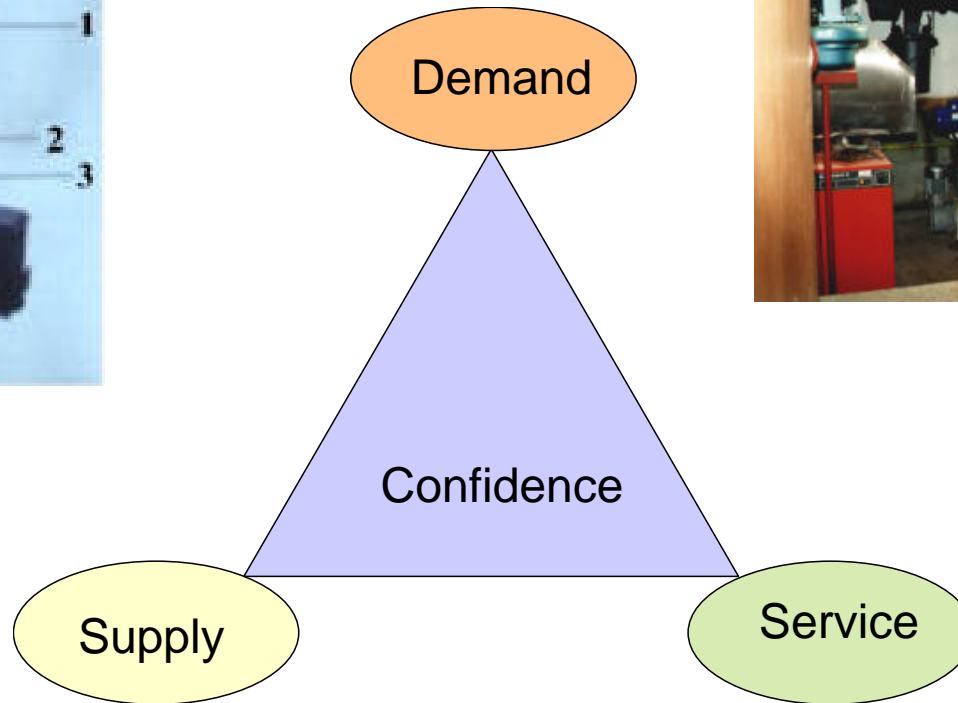
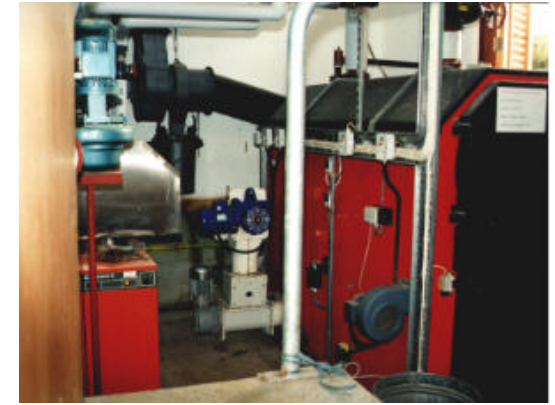
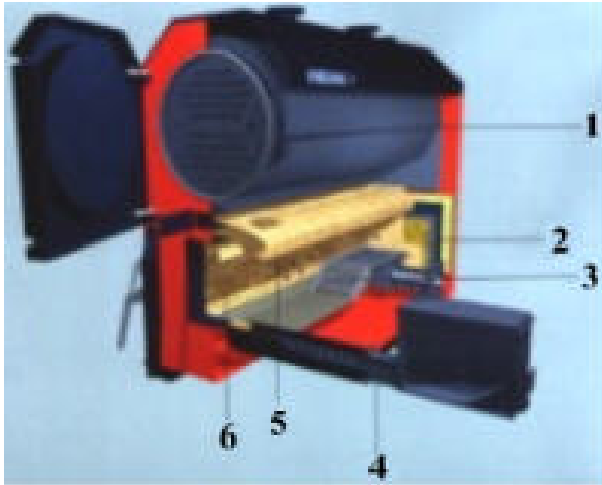
Tourism brings in (Euros):

- 70 million in Donegal
- 50 million in Sligo
- 39 million in Fermanagh

Grown by 50% in last 10 years in Fermanagh.



Promoting renewables



Developing Sustainable Building Technologies



A wide choice of materials now available:

- Block and brick,
- timber frame,
- straw bale, etc

Need for research and development to establish, produce and promote what is truly sustainable.

Eco Tourism

Need to offer range of attractions and accommodation

Most ecologically when it involves regeneration of old buildings rather than new build



Improving the Corridor

£132 million committed by DRD (NI) for improving A4 consisting of:

- a new dual carriage way from the M1 at Dungannon to Ballygawley
- bypass for Enniskillen
- bypass for Fivemiletown

Other improvements include:

- £10 million on the A32 Omagh to Enniskillen Road.



Expanding the Strategic Road Improvement Programme 2015

Consultation Document



Please respond by
Friday 29 September 2006
to:

Network Development Branch
Roads Service Headquarters
Clarence Court
10-18 Adelaide Street
Belfast
BT2 8GB

The Way Ahead

- Process is as important as content
- Learn from others experience
- Engage with Stakeholders



Thank You

Dr. Chris Boomer
Head of Development Plans
Western Divisional Planning Office, Omagh



INTERNATIONAL CENTRE FOR
LOCAL AND REGIONAL DEVELOPMENT

Promoting best practices in spatial planning and economic development.