

Implementing a Framework for Collaborative Action Spatial Strategies on the Island of Ireland

Session 2: Implementing Cross-Border Spatial Planning

Managing Growth through Spatial Planning: Learning from International Experience

John Driscoll

International Centre for Local & Regional Development (ICLRD)

Canal Court Hotel, Newry, 9 November 2006



Inter-Jurisdictional Cooperation

John Driscoll, Francois Vigier, Christa Lee-Chuvala, Gareth Doherty
International Centre for Local and Regional Development



INTERNATIONAL CENTRE FOR
LOCAL AND REGIONAL DEVELOPMENT

Promoting best practices in spatial planning and economic development.

Inter-jurisdictional cooperation is

a complex, incremental and difficult long-term process initiated, planned, implemented, monitored and tuned by two or more municipalities, which have voluntarily decided to face together common problems, to jointly take advantage of opportunities, to efficiently use existing resources, to effectively pursue a coherent set of strategic goals, in one or more areas of mutual interest.

Source: Liviu Ianasi



Inter-Jurisdictional Collaboration

Other countries/regions/local governments collaborating on a cross-border/inter-jurisdictional basis

Collaborative frameworks can align spatial strategies and financing mechanisms and improve public service delivery

It is possible to use strategic planning & targeted investment in infrastructure and services without loss of autonomy

Active involvement of the private sector, civic leadership and governments are key to successful inter-jurisdictional initiatives



Canada/US Cross-Border Regions

- **Post North America Free Trade Agreement (NAFTA) – 1994**
- **Significant Increase in Cross Border Trade**
- **North American integration is having a significant and lasting impact on the organization of economic activity within regions including cross-border**
- **Local Governments and regions are central economic players and key engines of growth.**
- **This suggests a new approach for regional development.**

Source: Policy Research Initiative, North American Linkages



Canada/US Cross-Border Regions

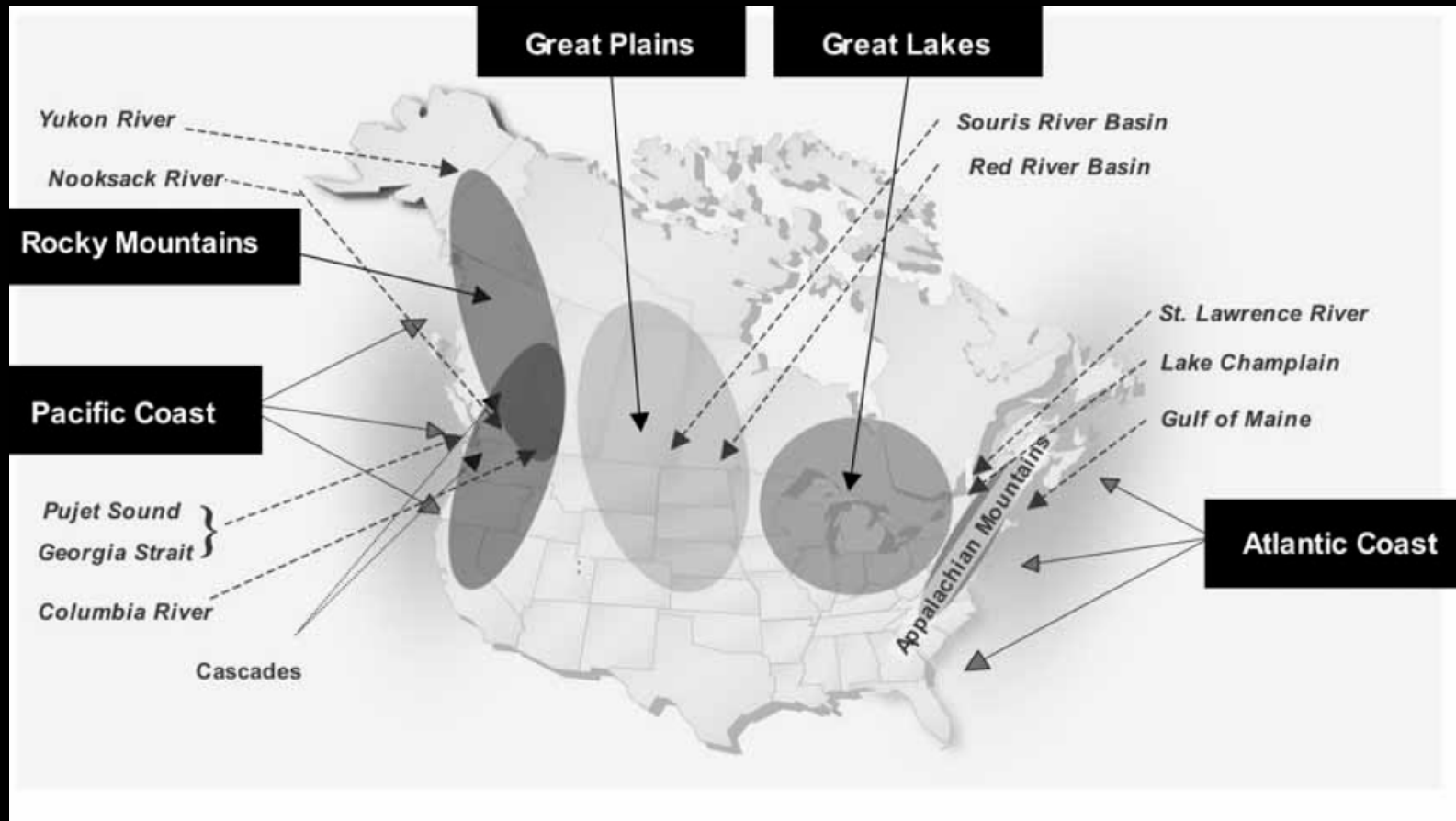
Based on **economic, socio-cultural, and organizational** considerations, groupings of neighbouring and nearby provinces and states can be identified.

- **West: British Columbia, Alberta, and Yukon with Alaska, Washington, Idaho, Oregon, and Montana.**
- **Prairies-Great Plains area: Alberta, Saskatchewan, and Manitoba with Montana, Wyoming, North Dakota, South Dakota, and Minnesota.**
- **Great Lakes-Heartland area: Ontario with Michigan, Indiana, and Ohio.**
- **East: Quebec with Vermont, Maine, New Hampshire and New York. Atlantic Canada with Maine, New Hampshire, Massachusetts, Rhode Island, and Connecticut.**

Source: Policy Research Initiative, North American Linkages



Canada-US Relations -- Emergence of Cross-Border Regions

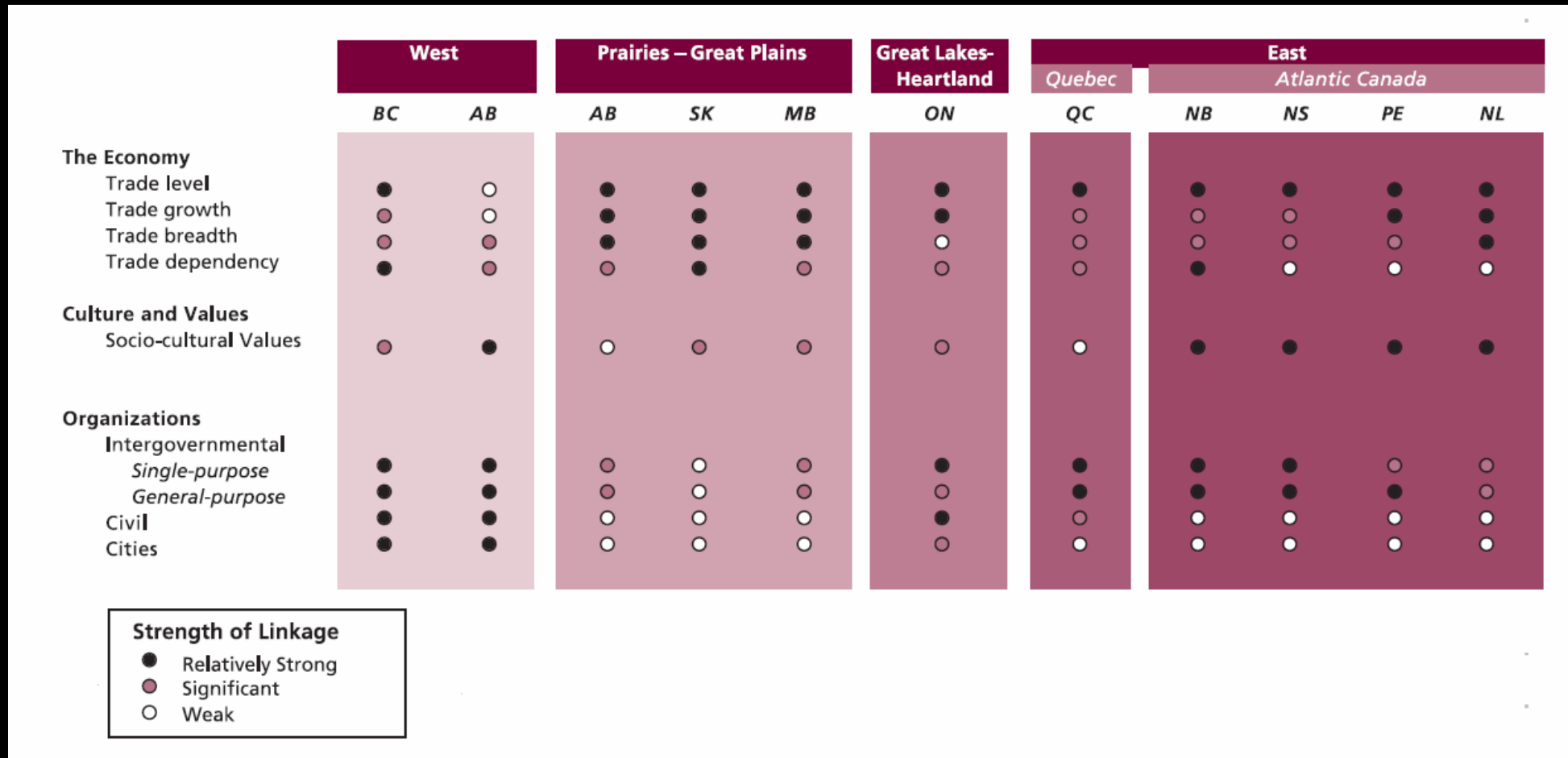


Source: "Canada-US Relations and the Emergence of Cross-Border Regions". Policy Research Initiative



New Directions in Spatial Planning in North America

Scope and Nature of Cross Border Links



Source: "Canada-US Relations and the Emergence of Cross-Border Regions". Government of Canada, Policy Research Initiative, page 5.





QUEBEC-NEW YORK

“One region...one future”

AN HISTORIC OPPORTUNITY



North America is in the midst of an economic realignment of historic proportions - and the Quebec- New York Corridor has become one of the key connections and beneficiaries of the shift.

From the days of European settlement, both the U.S. and Canada have been dominated by economic development strategies along an east-west axis. Each worked for two centuries to open up the interiors, developing roads, canals and trans-continental railways to tap raw materials and feed coastal industrial centers and ports.

But now the emphasis is shifting to a new north-south axis as the U.S. and Canadian economies integrate, with Mexico following as well. And one of the results is the emergence of a handful of north-south trade corridors which possess the critical transportation links between Canada and the U.S and which are becoming more than growing commercial routes - they are now NEW, BI-NATIONAL ECONOMIC REGIONS.

Source: “The Economic Impact of Canada on Clinton County, New York”. Plattsburgh North Country Chamber of Commerce, p.11:
www.quebecnewyorkcorridor.com



INTERNATIONAL CENTRE FOR
LOCAL AND REGIONAL DEVELOPMENT

Promoting best practices in spatial planning and economic development.



North America's Most Exciting Bi-National Region

Rediscover opportunity!

One continent...One market...One bi-national region
accessing the world's richest marketplace!



*Click here to register
for the
2006 Champlain/Lacolle Border Summit*



In 1609, explorers **Samuel De Champlain** and **Henry Hudson** established a European corridor of trade and commerce in North America - Champlain from the north, sailing down the St. Lawrence in Quebec and exploring Lake Champlain in northern New York; Hudson from the south, navigating the Hudson River in New York at a point north of Albany.

This Corridor region has now been the greatest focal point for North American trade and industry for almost **FOUR CENTURIES, AND THE BEST IS YET TO COME!**

Why? Because the **QUEBEC - NEW YORK CORRIDOR** serves and bi-sects what has become **THE WORLD'S RICHEST MARKETPLACE.**

Just consider these facts:

- **132 MILLION PEOPLE** – the **biggest population concentration in North America** —reside within one day's shipping time from the heart of the Quebec -New York Corridor. This is **50% OF THE TOTAL COMBINED POPULATION OF THE U.S. AND CANADA !**
- This population represents **OVER \$1.7 TRILLION (U.S.)** in personal income.
- Of the entire U.S. & Canada, this region is home to **56% of all skilled workers**; over **50% of all retail sales & wholesale receipts**; **54% of all manufacturing facilities**; and handles **60% of all the manufactured products** shipped within the U.S. and Canada.
- The **QUEBEC - NEW YORK CORRIDOR** directly links both the #1 and #2 trans-Atlantic seaports in North America — **MONTREAL** and **NEW YORK** .
- The **QUEBEC - NEW YORK CORRIDOR** has become a recognized global leader in all of the emerging sectors of the new 21st – century economy, including **INFORMATION TECHNOLOGY, NANOTECHNOLOGY, BIOTECH & LIFE SCIENCES, AEROSPACE, PHOTONICS/OPTICS**, and others.
- Stretching just 330 miles (531km) from Montreal to New York City, the **QUEBEC-NEW YORK CORRIDOR** not only features North America's richest market and its top logistical assets – it has become a **UNIQUELY INTEGRATED, BI-NATIONAL ECONOMIC REGION**, offering the **VERY BEST OF BOTH THE U.S. AND CANADA IN ONE LOCATION!**



- Border Crossing
- Organization
- Profile
- Economic Development
- Technology Corridor
- Transportation
- Education & Workforce
- News
- Research & Data
- Events & Meetings
- Tourism
- Doing Business in the U.S.
- Doing Business in Canada
- Energy
- Contact Us
- Links

Sponsored by:
nationalgrid



Internet



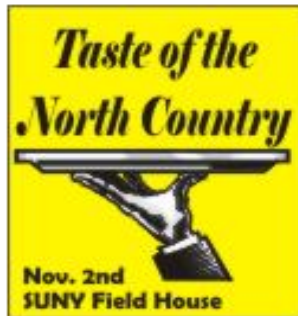
Characteristics of Québec-Northern New England Cross-Border Region

- Mature (e.g. transportation) and emerging (e.g. nanotechnology) linkages;
- Québec-New York corridor evolving into a bi-national region.
- Response to NAFTA— economic activity shifting south and west—how does the Northeast region respond?
- Use of bilateral mechanisms (e.g. Memoranda of Understanding)
 - 2001 – Federation of Quebec Chambers of Commerce and Plattsburg-North Country Chamber of Commerce
 - 2002 --|First Quebec and New York Governments economic summit—economy, transportation, science and technology and tourism

“The Emergence of Cross-Border Regions Between Canada and the United States: Roundtables Synthesis Report”. Policy Research Initiative, May 2006, p.5.



Search Directory



Welcome! Bienvenue!

to the Plattsburgh-North Country Region.

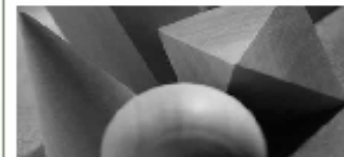
- Montreal's U.S. Suburb.
- Hub of the QUEBEC-NEW YORK CORRIDOR.
- Gateway to NEW YORK'S TECH VALLEY.
- Heart of the ADIRONDACKS.
- A Place where LIFE IS AS IT SHOULD BE!



Plattsburgh
International
Airport



BORDER CROSSING



Join us as we grow an airport...



Plattsburgh International Airport

Montreal's U.S. Airport
www.montrealairport-us.com

Let us talk to you about how we can help your industrial or aviation-related business work and thrive at this facility!

The aviation assets of the former Plattsburgh Air Force Base are now being redeveloped as **Plattsburgh International Airport**. This strategic location has tremendous opportunity for all types of aviation operations — including yours!

Some main features of this facility include:

- A 11,700 foot runway
- 12 million square foot concrete ramp space
- 1.5 million square feet of aviation-related industrial space
- Multi-modal capabilities with direct access to rail, an immediate interchange on **Interstate 87**, and just one hour from the **Port of Montreal** (North America's #1 Trans-Atlantic Seaport)
- New passenger terminal under construction for completion in fall 2006

Offering exciting opportunities for:

- Airlines & Charters
- Cargo
- Maintenance
- Manufacturing
- Anything to do with anything that flies!

**Call us today for
more information!**

518-563-1000



Source: "The Economic Impact of Canada on Clinton County, New York". Plattsburgh North Country Chamber of Commerce, p.12:
www.quebecnewyorkcorridor.com

The Economic Impact of Canada on Clinton County, New York

Employees of Canadian-owned Businesses in Clinton County

EMPLOYMENT

Number of Employees of Canadian-owned Businesses, International Border Businesses & Border Agencies in Clinton County:

Employment	Percent of County Total:
1994: 2,483	7.5%
1996: 2,927	9.2%
1998: 3,588	11.6%
2000: 4,508	13.5%
2002: 4,646	14.2%
2004: 4,540	14%

Payroll of Canadian-owned Businesses, International Border Businesses & Border Businesses in Clinton County, plus their use of Clinton County based Temporary Employment Services:

1994: \$59,745,965 **1996:** \$77,489,913 **1998:** \$99,691,377 **2000:** \$132,942,602 **2002:** \$152,706,428

2004 \$160,271,729

Source: "The Emergence of Cross-Border Regions Interim Report". Policy Research Initiative, November 2005, page 12.





THE DEVELOPMENT CORPORATION

A Strong History,
a Bright Future.

Clinton County...

Your gateway between the
bright lights of Montreal, the
Green Mountains of Vermont
and the crisp mountain air
of the Adirondacks!

*New York State Empire Zone
Designated Shovel-Ready Sites.*

Helping Businesses Relocate to — and Expand in Clinton County, New York

61 Area Development Dr., Plattsburgh NY 12901

tel (888) 699-6757 • tel (518) 563-3100 • fax (518) 562-2232

tdc@thedevelopcorp.com • www.thedevelopcorp.com

Source: "The Economic Impact of Canada on Clinton County, New York". Plattsburgh North Country Chamber of Commerce, p.9:
www.quebecnewyorkcorridor.com

Canada/US Cross-Border Regions

“...firms like IBM and GE, whose products may cross the border several times at different stages of production, may decide to locate exclusively to the United States **if the border becomes too thick**”.

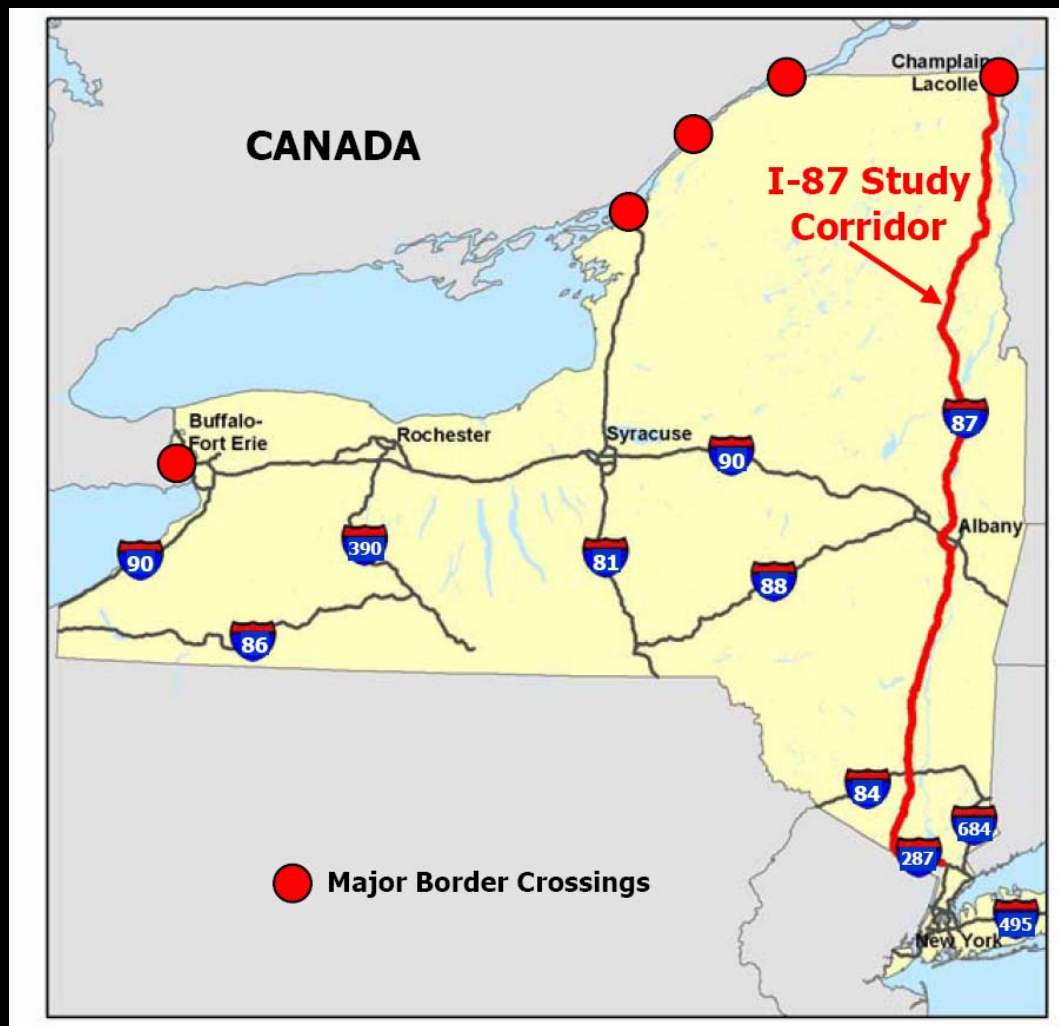
François Lebrun

Former Québec Delegate General in Boston

As cited in “The Emergence of Cross-Border Regions Between Canada and the United States: Roundtables Synthesis Report”. Policy Research Initiative, May 2006, p.10.



Multipart Corridor with a Common Vision



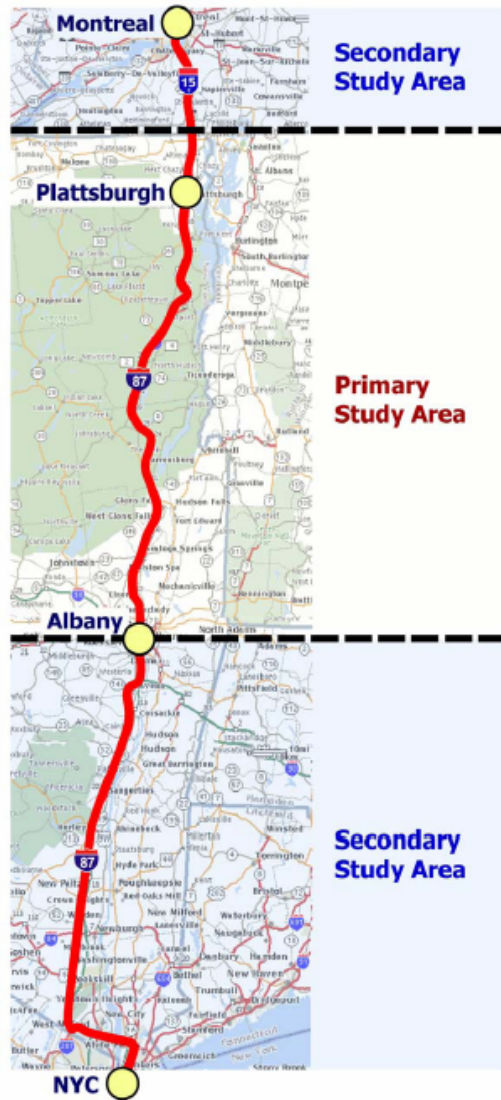
Source: New York State



INTERNATIONAL CENTRE FOR
LOCAL AND REGIONAL DEVELOPMENT

Promoting best practices in spatial planning and economic development.

Figure E-1
Project Study Areas



Factors that Promote Successful Cross-Border Initiatives

(PRI Roundtables Synthesis Report May 2006)

- **Ongoing tangible benefits, with early clear successes;**
- **Tangible results are ensured if cross-border activities receive non-partisan political support with frequent interactions that engage both the public and private sectors;**
- **Regular face-to-face meetings that build trust and long-term relationships, and in turn guarantee the continuity of projects;**
- **A strong relationship between the private and public sectors ensures there is sufficient and timely support for those working on the front line;**
- **The private sector has the key role in the promotion of cross-border initiatives.**

-“The Emergence of Cross-Border Regions Between Canada and the United States: Roundtables Synthesis Report”. Policy Research Initiative, May 2006, p.3.



Voluntary Regionalism

	Example	Frequency
IMMEDIATE CRISIS	Flood or pollution	Fairly rare
PERCEIVED THREAT	Loss of economic base or disappearance of open space. Fiscal disparities.	Typical
CAPTURING AN OPPORTUNITY	Coordinating infrastructure Investment	Typical

Source: Allan Wallis, "The New Regionalism Inventing Governance Structures for the Early Twenty-First Century"



U.S Experience Ad Hoc Regionalism

- **Regional agencies that provide information and advice to local governments**
- **Voluntary association of local governments to jointly manage growth and share the public benefits of future development**
- **Special purpose agencies that supplement the powers of local government to manage a region**



U.S Experience Ad Hoc Regionalism

- **Regional agencies that provide information and advice to local governments**



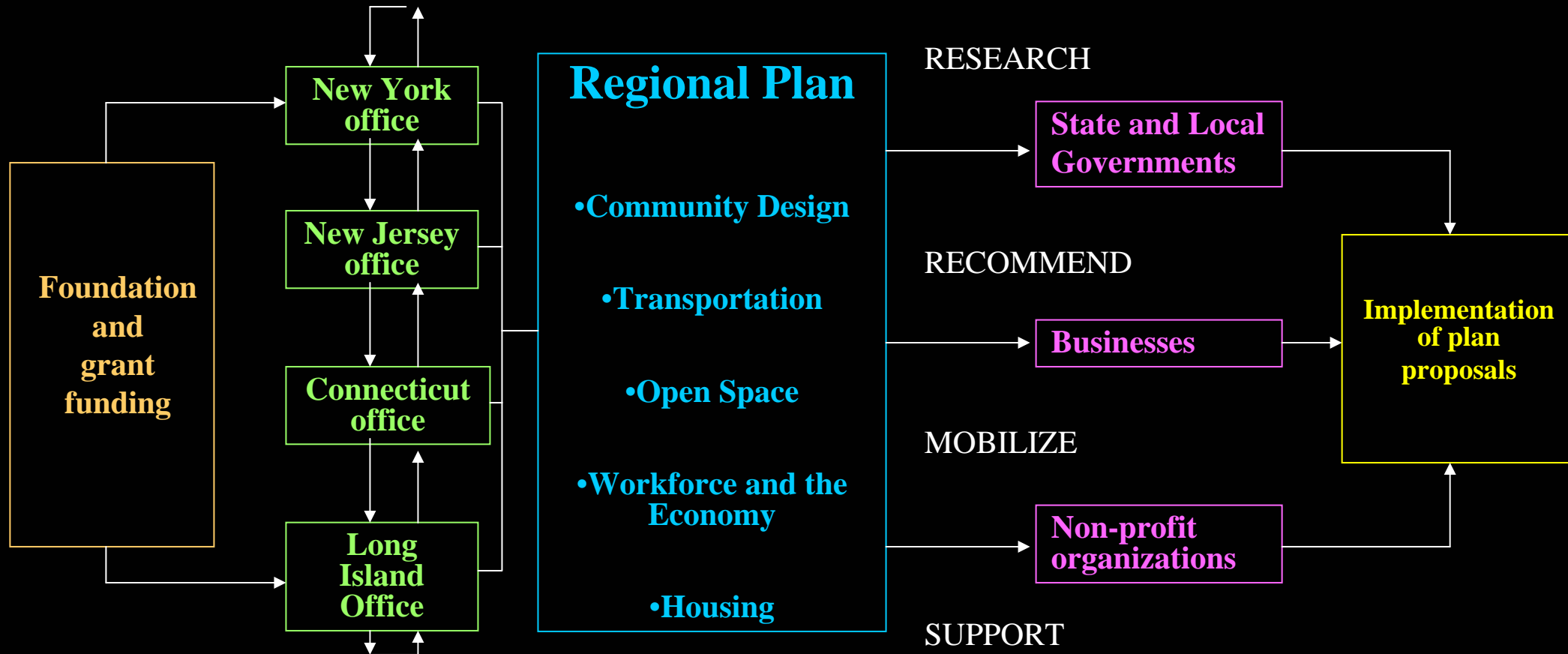
Regional Plan Association, Tri-State Region

- An independent non-profit organization created in 1922; The oldest regional planning association in the country
- Operates in the Tri-State Region around New York City, a \$1 trillion economy that includes northern New Jersey and southwestern Connecticut
- RPA is an advocate for improving the quality of life and the economic competitiveness of the region. It
 - Undertakes studies;
 - Makes planning recommendations
 - Seeks strategic partnerships with key stakeholders;
 - Gives technical support for the implementation of policies



New York Regional Plan Association (RPA)

Action and Influence



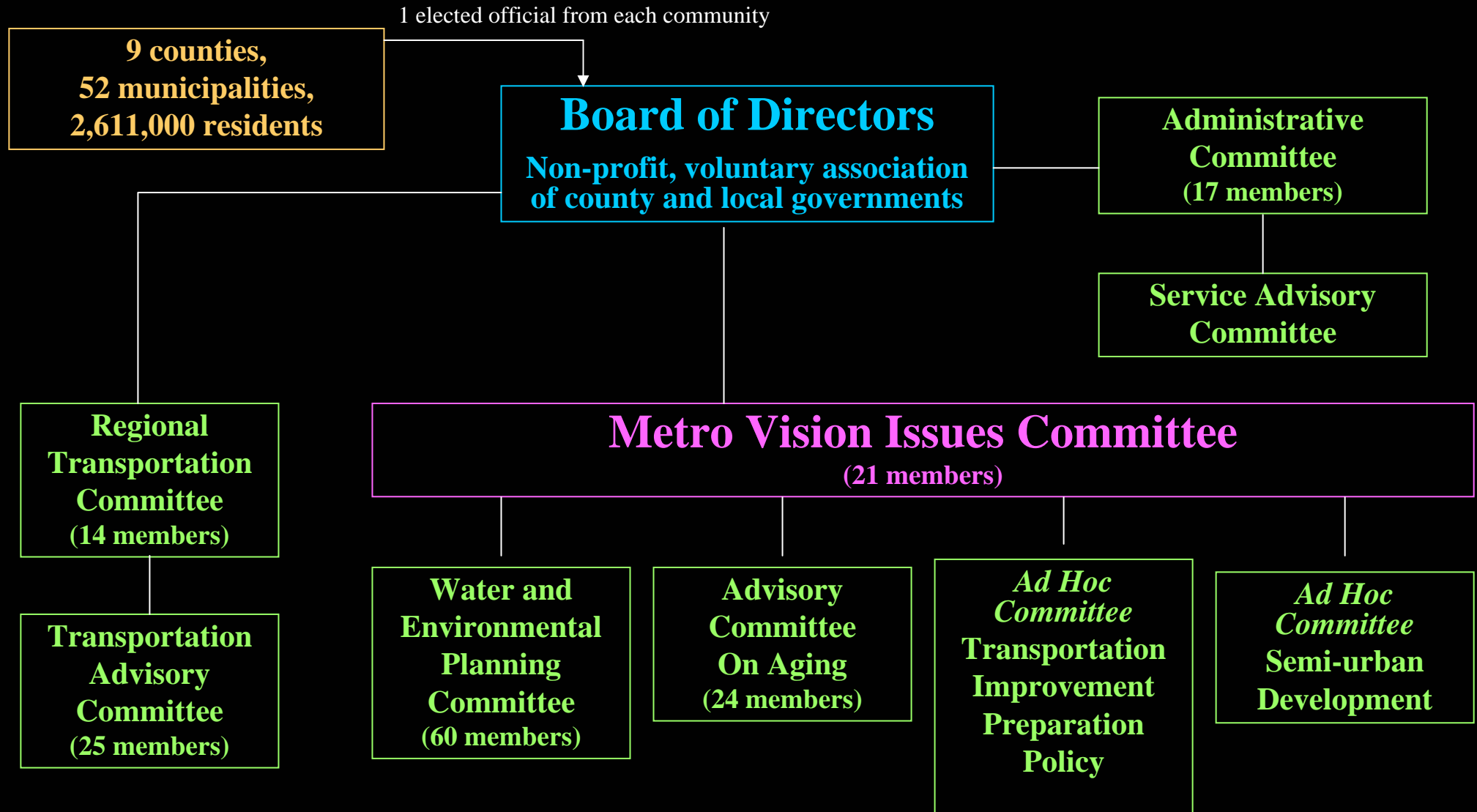
U.S Experience Ad Hoc Regionalism

- **Voluntary association of local governments to jointly manage growth and share the public benefits of future development**



Denver Regional Council of Governments:

Organizational Structure

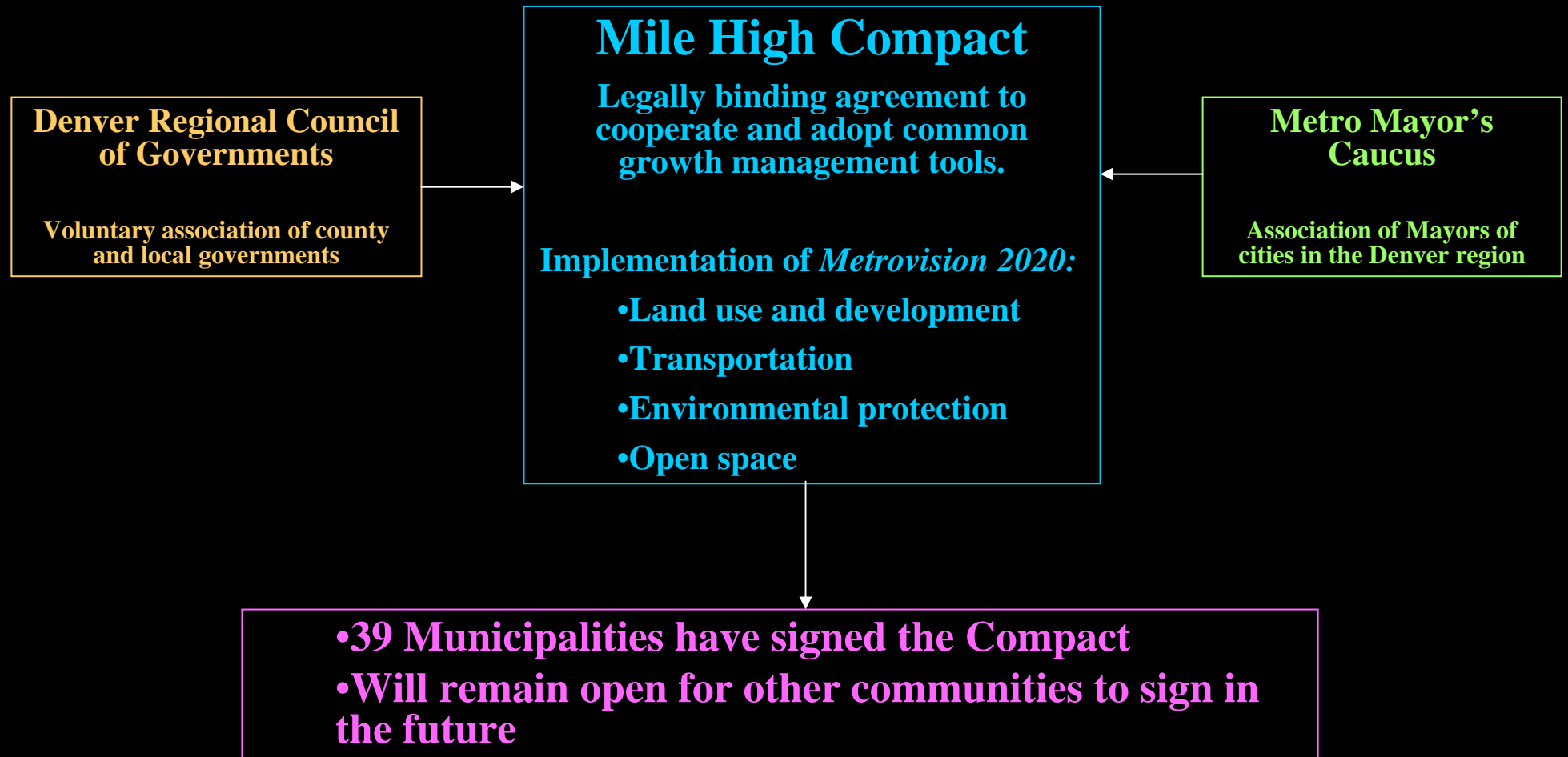


Mile High Compact (MHC), Denver, Colorado

- A voluntary association of County and Municipal governments representing over 80% of the Denver region's population.
- Communities bind themselves to work together to adopt common growth management tools to implement the region's long-term plan **Metro Vision 2020**
- The Mile High Compact
 - Land use & development regulations
 - Transportation
 - Environment
 - Open space



Mile High Compact: Agreement Structure



U.S Experience Ad Hoc Regionalism

- **Special purpose agencies that supplement the powers of local government to manage a region**



The Cape Cod Planning Commission

Significant Natural Resource Areas



Regional Policy Plan

Approved November 6, 1996

Cape Cod Significant Natural Resource Areas

- Unfragmented Forested Habitat
- Water Body
- 350 foot buffer of Vernal Pool (APCC Atlas and NHESP)
- Wetland – Salt and Inland, MacConnell
- Public Water Supply Wellhead Protection Area
- Potential Public Water Supply Area
- Rare Wetland Wildlife Habitat and Priority Sites for Rare Species and Natural Communities from NHESP and from APCC Atlas
- Critical Upland Area (APCC Atlas)
- Major Road
- Edge of Wellhead Protection Area
- 300 foot buffer from pond shore
- Mass. Military Reservation

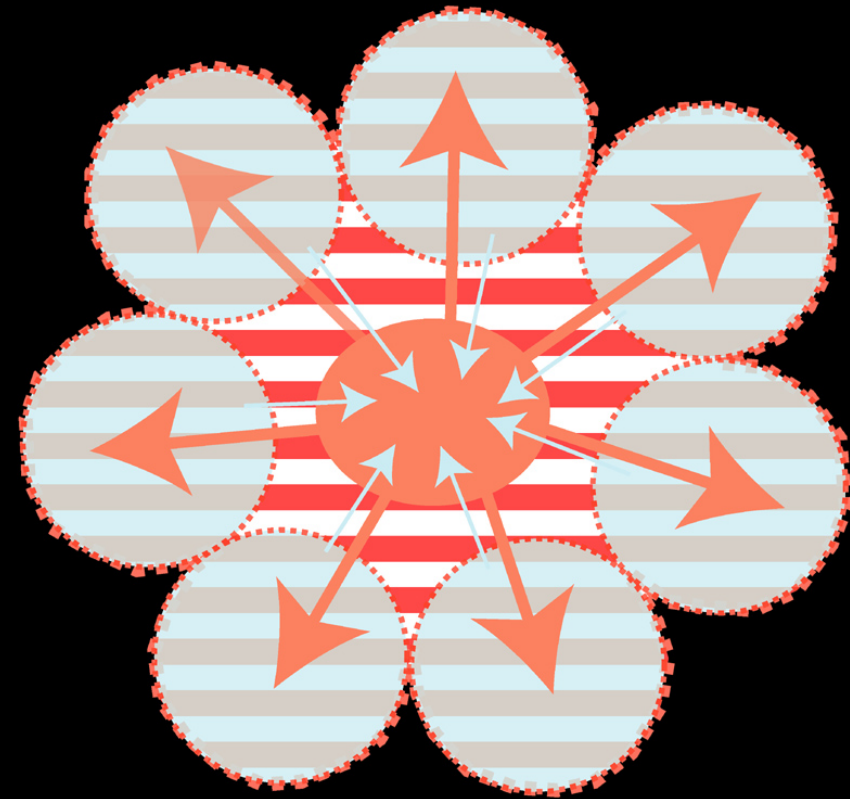
Harvard University Center for Urban Development Studies



Regional Planning Commission

Cape Cod, Ma.

- Differentiates **local vs. regional interest** in urban development planning.
- Prepares a **regional plan** with which local comprehensive plans must comply.
- Has **legislative authority to supercede local decisions** where they adversely impact the greater regional interest.
- **Local governments have representation.**
- **Financially independent** with funding from state legislature and/or local property tax.

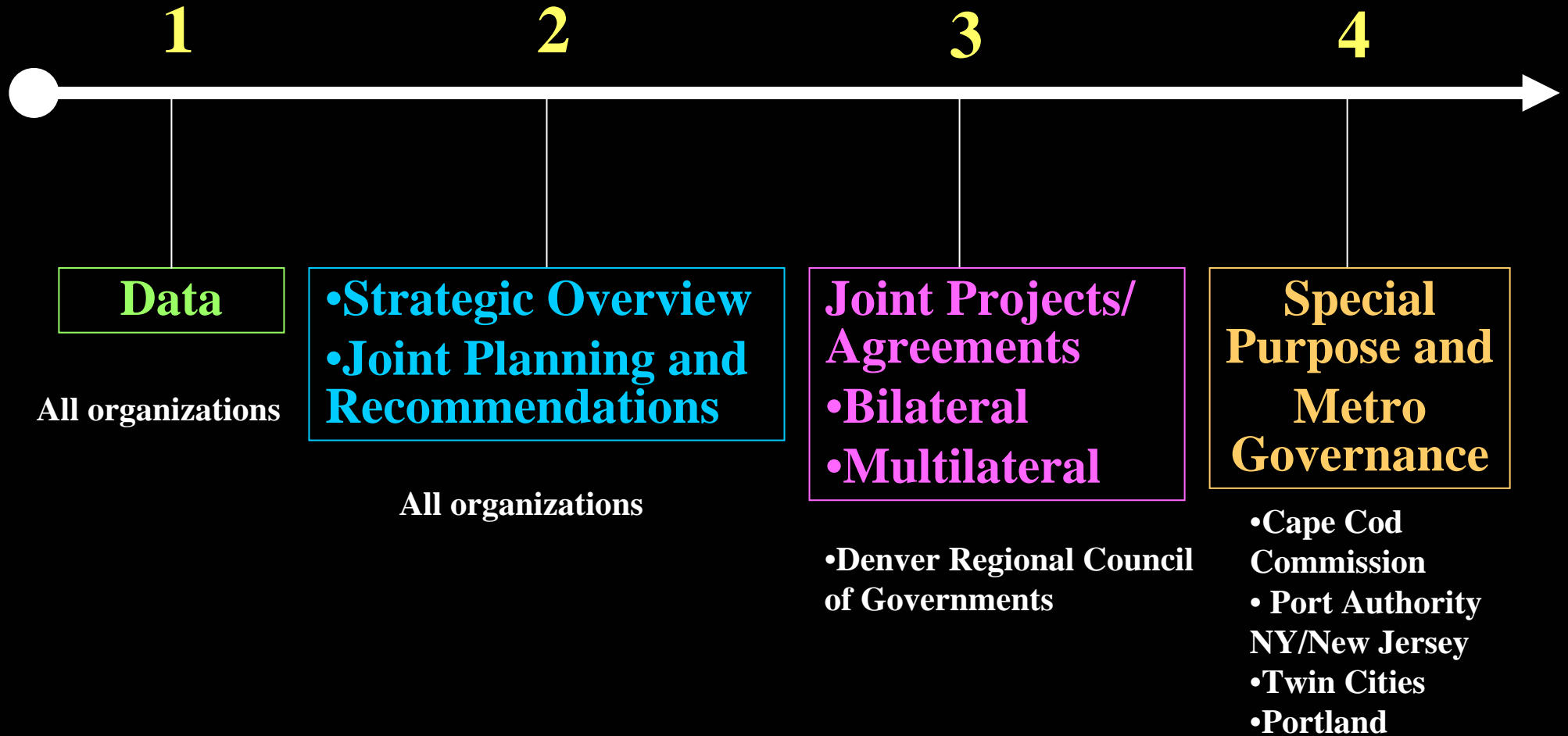


The first interstate authority in the United States was the **Port Authority** of New York and New Jersey.

- Created in 1921 with the encouragement of the business community, it had the power to raise revenue through the bonds.



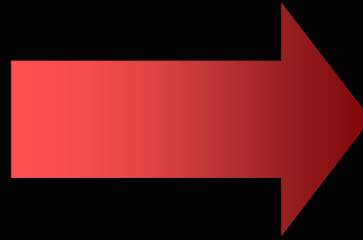
Levels of Regional Collaboration



Old Regionalism versus New Regionalism

Old Regionalism Hierarchy-Based System

Government
Structure
Closed
Coordination
Accountability
Power



New Regionalism Network-Based System

Governance
Process
Open
Collaboration
Trust
Empowerment

Source: Allan Wallis, "The New Regionalism Inventing Governance Structures for the Early Twenty-First Century"



Collaborative Framework Level

Activity

National

Sub-regional

Local

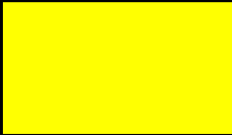
Data base and mapping

France and UK



Information Exchange

Baltic and
Northwest Russia



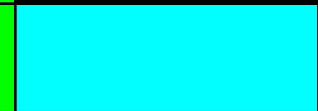
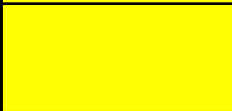
Cultural and Environmental
Preservation

Italy and
Switzerland



Waste management

France and Spain



Cross-border Metropolitan
Area

France, Germany,
and Switzerland



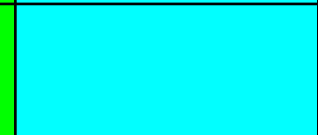
Cross-border Metropolitan
Area

France and
Switzerland



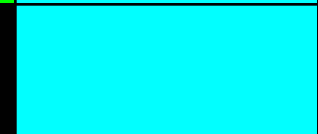
Cross-border Metropolitan
Area

Belgium and France



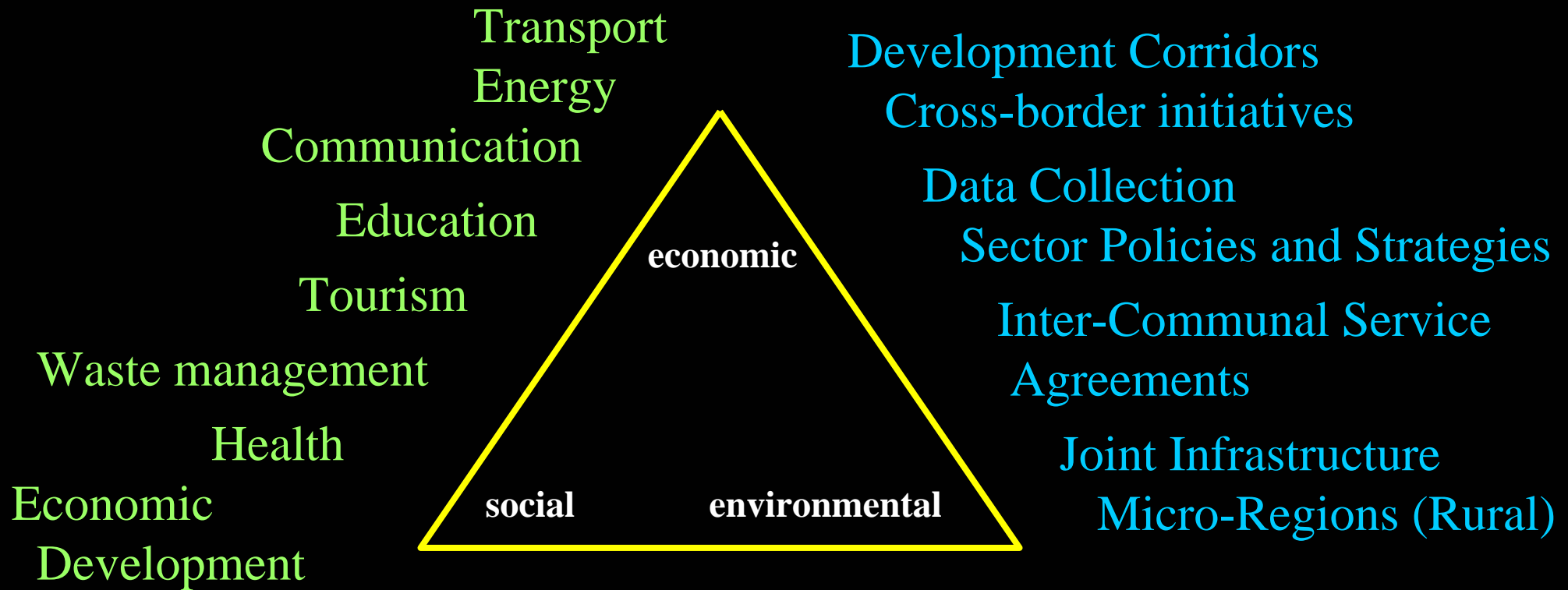
Local Government
Cooperative Agreements

France and
Germany



Areas of Collaboration

Types of Collaboration



“Spatial” levels of Collaboration

- EU-All-Island
- Regional/Cross Border
- Local

Challenge is to Structure and Implement Proactive Frameworks for Collaboration

Thank You

John Driscoll

Director

International Centre for Local & Regional Development (ICLRD)

Email: jpdjuly52@aol.com

